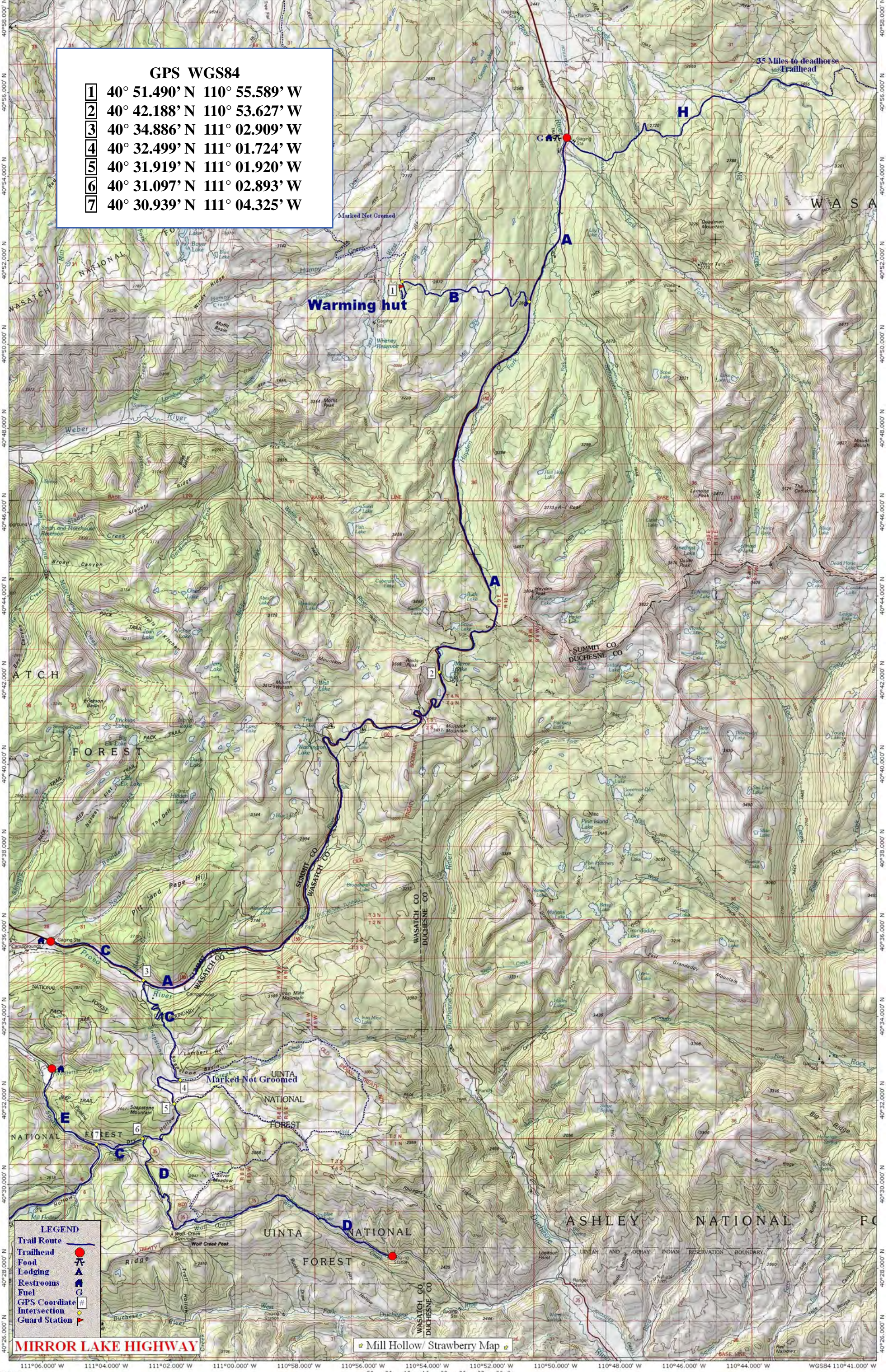


GPS WGS84

- 1 40° 51.490' N 110° 55.589' W
- 2 40° 42.188' N 110° 53.627' W
- 3 40° 34.886' N 111° 02.909' W
- 4 40° 32.499' N 111° 01.724' W
- 5 40° 31.919' N 111° 01.920' W
- 6 40° 31.097' N 111° 02.893' W
- 7 40° 30.939' N 111° 04.325' W



35 Miles to deadhorse Trailhead

Warming hut

GAT

H

A

1

B

A

2

3

A

4

5

6

D

7

D

LEGEND

- Trail Route
- Trailhead
- Food
- Restrooms
- Fuel
- GPS Coordinate Intersection
- Guard Station

MIRROR LAKE HIGHWAY

Mill Hollow/ Strawberry Map